

## **UNIFORM SPECIFICATION – FOR FIRST YEARS**

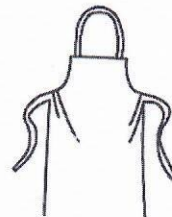
### **Food Production & Bakery Practical:**

**a. Chef coat :**



Colour – white, Material : Drill, sanforized, Tailoring : With overlap in front. Deep narrow pocket in front and on one sleeve. Refer sketch.

- b. Black Pants**
- c. Apron – White Drill Material.  
Sanforized.**
- d. Scarf: Triangular –Red and White  
Checked 90 cms × 60 cms × 60 cms.**



- e. Chef\_cap**
- f. Black socks.**
- g. Black Safety shoes**
- h. Kitchen cloth – white cotton, 2 nos**
- i. Kitchen Cleaing cloth – Green &  
White Checked Cotton 2 nos**
- j. Tool kit**



### **F&B Service Practical:**

- a. Pants: Black Suiting.  
Formal. Straight cut with a  
Pleat on either side. Side  
pockets and back pockets**
- b. Waist Coat: Suiting  
Material, Black**
- c. White full sleeved shirt**



- d. Black bow tie
- e. Waiter's cloth – 2 nos
- f. Serviettes – Damask white 45 cms \* 45 cms – 4 nos.
- g. Black socks
- h. Black Oxford Shoes ( Boys) Closed shoes – not more than 2 inch heel( Girls)
- i. Bottle Opener
- j. Lighter



**Front Office Practical :**

Black pants , White full sleeved shirt, Black oxford shoes, Black socks. (as for F& B Service), Black Tie.

**Accommodation Operation Practical:** White full sleeved shirt, Black pants , Black oxford shoes (Black socks, Apron with a pocket (12 inches wide, 6 inches high) in front ,

\*\* Dusters (blue and white check) 2 nos



www.shutterstock.com 1062455564

\*\* Issued from the Institute

Students are expected to be in their respective uniforms during class hours.

**Girls:** have the option of wearing knee length formal black skirt (A-line) with black stockings instead of pants for F & B Service Practical. Closed shoes with not more than 2 inch heel.

Girls also will be required to buy a saree at a later date.

\*\*\*\*\*

Sur  
