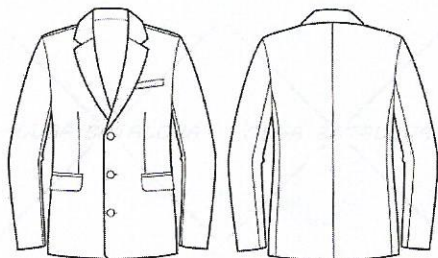


# STUDENT UNIFORM SPECIFICATION

## Third Year – Suit (Pant & Coat)



**Colour :** Dark Blue

**Fabric:** Terrywool ; Recommended fabric: Raymond's Blue Sapphire




### Tailoring Details:

- Coat: Single breast, two or three button
- Pant : Business style, straight cut
- Shirt : White full sleeved formal
- Tie – Burgundy red
- Black oxford shoes, black socks, black tie, formal watch.

**Girls:** may wear blouse with a scarf, closed shoes with not more than 2 inch heels. Girls also have the option of wearing sarees as prescribed by the Front Office faculty.

  
5/9/19

  
5/4/19